

THE BEAUTY EXPERT

allure

NOVEMBER 2013

Dreamy
HAIR
*Effortless,
Imperfect,
And Totally
Romantic*

Naomi
Watts
Reluctant Princess,
Ballsy First Date

**Fresh,
Glowing
Skin**

5 Mistakes That
Make It Dull

*Hunger
Games*
Makeup

Insanely Pretty...and
Just a Little Insane

*The Allure Guide
To Great Sex*

Everything You Wanted to Know
But Were Afraid to Ask
(In a Breathy Whisper)

Brush Up

Baby hairbrush? Designer toothbrush? M.A.C.'s new Masterclass makeup brushes look entirely unfamiliar. And the angle is that you don't have to angle them. "Traditional makeup brushes are better suited to use on someone else's face," says Nick Gavrelis, vice president of global product development at M.A.C. With bristles that are perpendicular to the handle, this new design gets fingers, hands, and handles out of the way, allowing for freer movement and greater precision when applying your own makeup. The dense, synthetic bristles are exceptionally soft, which lets you apply creams and powders with zero streaks and almost zero effort. —SOPHIA PANYCH



Makeup artists tested the brushes backstage during fall 2013 Fashion Week.



Smell This Fendi L'Acquarossa

THE NOTES:

Bergamot, rose, red cedarwood, and patchouli.

THIS MONTH'S EXPERTS:

A New York City chef, fragrance consultant, and sommelier.

—ALEXANDRA OWENS

"It reminds me of green coriander. I wouldn't call it spicy because it's so well balanced, but it's very aromatic."

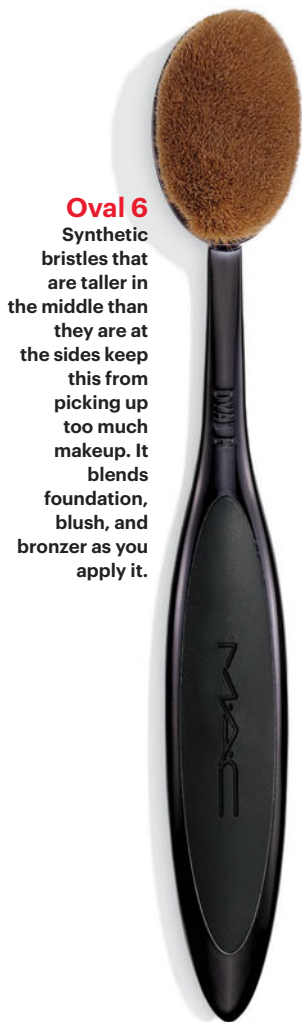
—Andrew Carmellini, co-owner of Locanda Verde, Lafayette, and The Dutch

"It's warm and woody with a hint of spice."

—Ann Gottlieb, fragrance consultant, Ann Gottlieb Associates

"I like it because it's not too much. The spices and florals have a strong, elegant presence without seeming invasive."

—Roberto Paris, wine director of Il Buco Alimentari & Vineria



Oval 6

Synthetic bristles that are taller in the middle than they are at the sides keep this from picking up too much makeup. It blends foundation, blush, and bronzer as you apply it.



Oval 3

Forget flat, domed, and tapered eye-shadow brushes—this does the job of all three. Place it on your lid, sweep it along your crease, or point it right at the inner corner. It's also great at applying concealer in hard-to-reach places (like the sides of your nose).



Linear 1

The solution to shaky hands, this brush practically draws straight lines along the lid for you. Just position it at the inner corner of one eye and pull the brush sideways. The bristles cover twice the area of a traditional eyeliner brush—and it works on brows and lips.

Tip
They may look like toothbrushes, but don't use them that way. Light, gliding motions (rather than stiff scrubbing ones) get the job done gently.

Free Stuff

Need more reasons to be thankful this season? The first 500 *Allure* readers to sign up at noon EST on these days will get a full-size product free! Go to allure.com/go/free-stuff for details. —JENNA ROSENSTEIN



November 4
NCLA Nail Lacquer in Prized Possessions. When an invite calls for festive attire, two coats of this glittery polish nails it.



November 5
Mary Kay At Play Just for Eyes Eye Shadow. This palette really shines at night. Smudge the black-gold or emerald shades on your lash lines.



November 6
Yardley London Almond Buttercream and Vanilla & Sweet Orchid Bath Bars. About 100 times more delicious-smelling than average bar soap.



November 7
B'iotia Botanicals Intensive Therapy Herbal Shampoo and Conditioner. The duo boosts volume and reduces hair loss—without a chemical odor.